

IT TAKES AS MUCH
ENERGY TO WISH AS IT
DOES TO PLAN.

– Eleanor Roosevelt

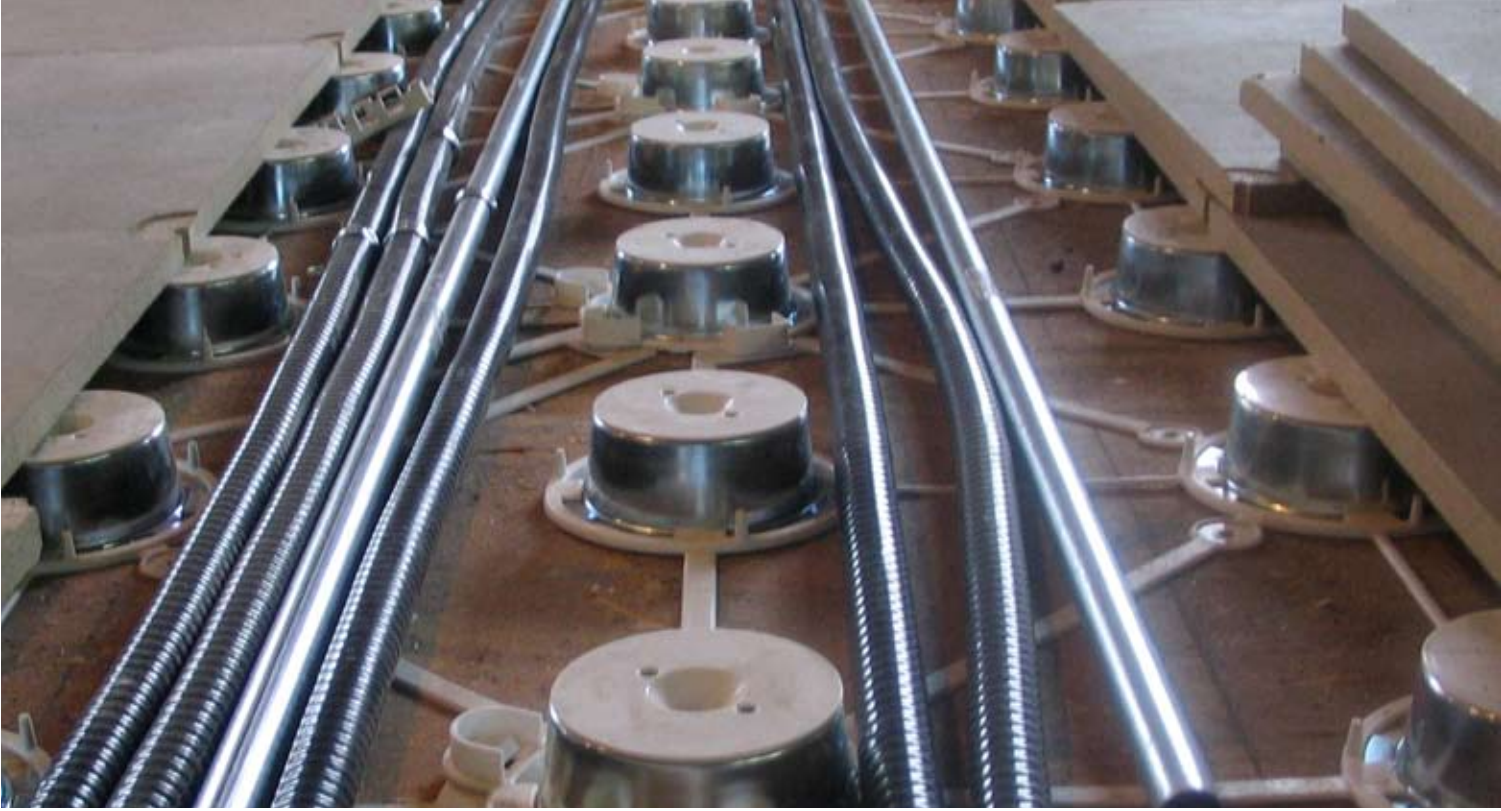
The DIRT Floor is a low-profile floor. At just two and five-eighths inches high it doesn't support HVAC, but it does support adaptable power and data infrastructures. In some cases, where ceiling conditions are limiting, a low-profile floor is the only choice.

The clever design of the DIRT Floor components makes it straightforward to install. Once in place, the sub-trades simply open the pathways and lay down their cables thereby lowering labor hours. This is compared to going up and down ladders and feeding wires into trays in the ceiling.

No matter the brand of floor, the smartest approach is to fill it with modular power and data solutions.

(We're partial to Spider Agile Technology www.spidermfg.com and Axios Networks www.axiosnetworks.com.)





Pre-manufactured, pre-wired, pre-tested units are quickly installed and easily reconfigured by in-house teams, rather than the conventional method of building a cable infrastructure from scratch on-site, which is disposed of when changes are made.

By having modular power and data solutions within easy reach in the floor, electrical and data contractors do not need the same number of master technicians on-site. Those who are there are working in a clean open space without obstruction. When other trades arrive on-site for their part of the scope, they will not touch their newly installed cables and wires. The infrastructure is safe under the floor. Ultimately instead of paying for more labor hours you are paying for a higher quality asset that has strategic and ongoing benefits for your business.

The DIRT Floor is sturdy, quiet and easy to install and access. Its low-profile means you will not noticeably lose ceiling height, yet you will have a 21st century technology infrastructure at your feet and ready to adapt to any of your needs.